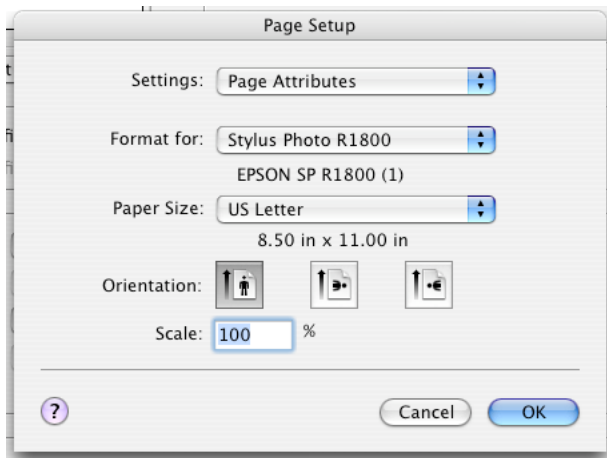
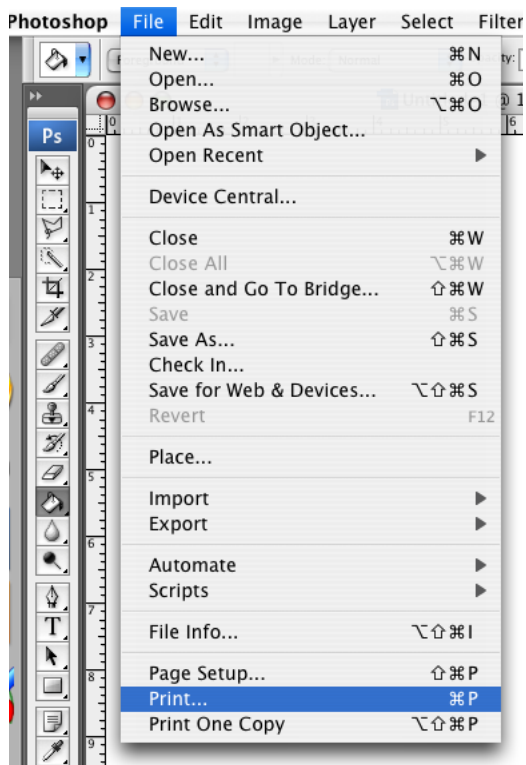


Printing with Color Profiles

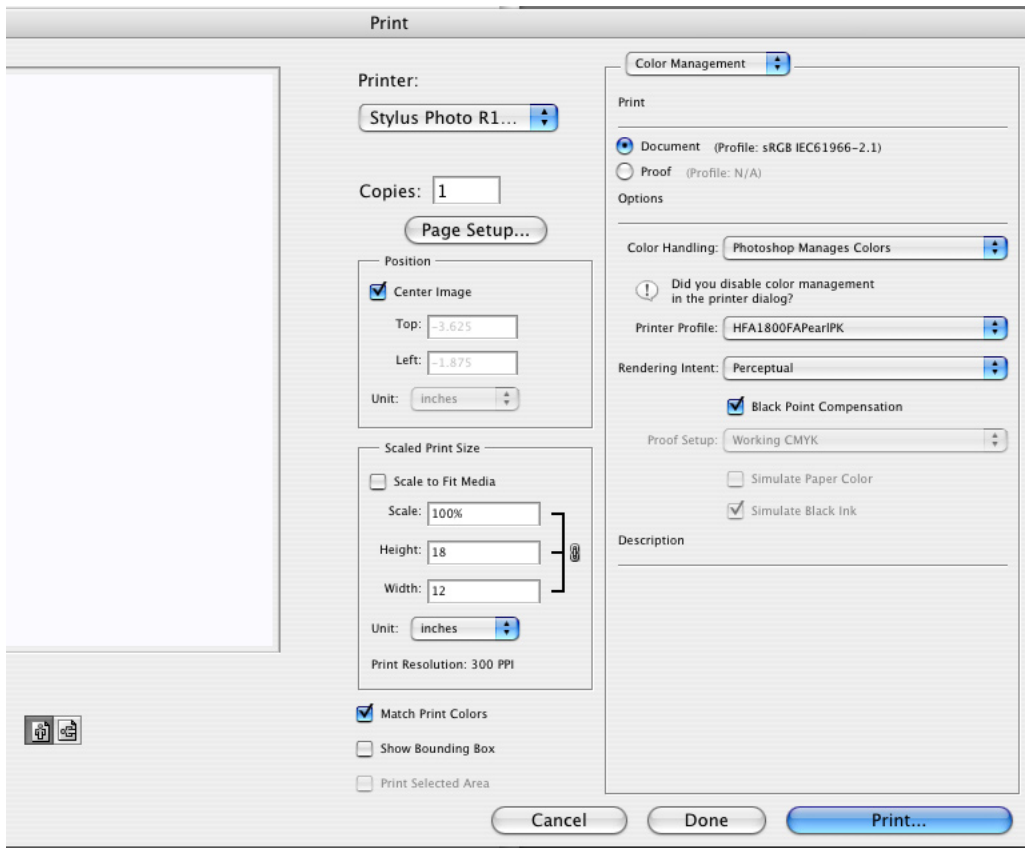
From Adobe Photoshop



Select *File > Page Setup* and match the settings shown. "Paper size" should match the size being used.



Select *File > Print*



Match the settings shown under “Color Management”. For “Printer Profile”, select the appropriate profile for the paper being used.

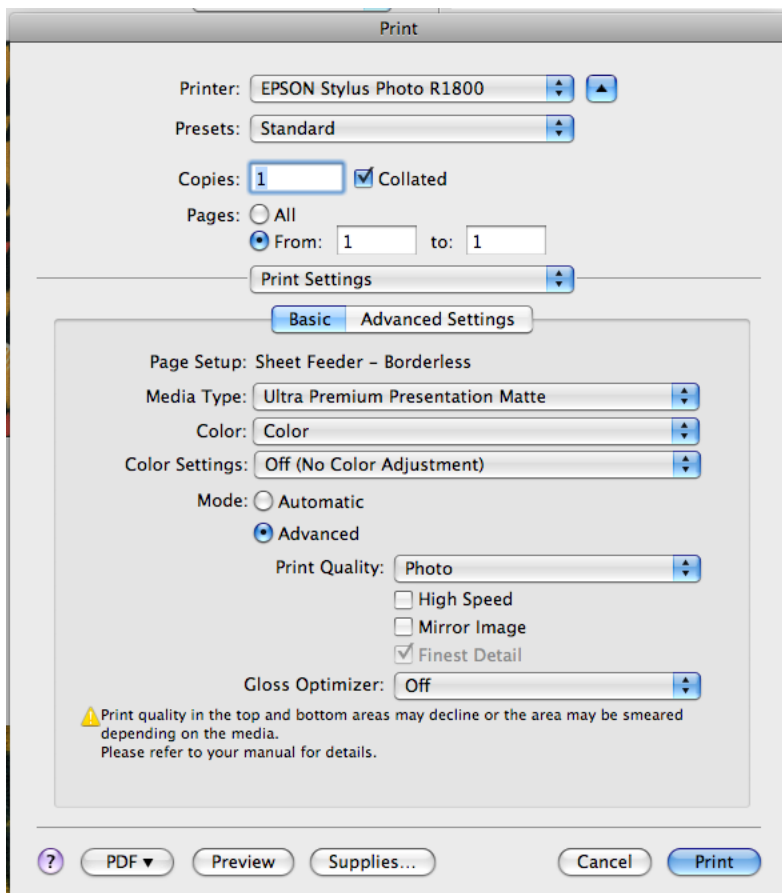
For Enhanced Matte:
_SPR1800 Enhanced Matte
or
_SPR1800 EnMatte BstPhoto

For Luster:
_SPR1800 Premium Luster

For Glossy:
_SPR1800 Premium Glossy

For user-supplied paper check with the paper manufacturer for color profiles option.

Click “Print”



In the dialog box that comes up, select “Print Settings” from the third dropdown, and match the settings shown to the left for Color Settings, Mode, and High Speed while following the guidelines below for Media Type and Gloss Optimizer.

If using a gloss or semi-gloss paper, be sure that “Gloss Optimizer” is on, otherwise turn it off. For Media Type, match the paper you are using.

For Enhanced Matte:
Media Type: Ultra Premium Presentation Matte
Gloss Optimizer: Off

For Luster:
Media Type: Ultra Premium Photo Luster
Gloss Optimizer: On

For Glossy:
Media Type: Ultra Premium Photo Glossy
Gloss Optimizer: On

Click “Print” and wait while the document prints.